



Line of Goodwill

The Gateway/Habitat/Matrimandir
Visitor Access



Background

Auroville, the 'City the Earth Needs,' is a universal township in the making, based on the evolutionary vision of the Indian seer, Sri Aurobindo and his spiritual partner, Mirra Alfassa, known as the Mother.

The goal of Auroville is to realize Human Unity. Through research and discoveries Auroville strives to become a living embodiment of an actual living Human Unity.

The Mother initiated a city plan for 50,000 where people from all over the world could learn to live and work together in unity. To achieve this in a 2.5 km radius the innovative Lines of Force came into being to manage density with a balanced, free flowing environment.

Three projects have come together to realize the longest Line of Force, Line of Force-1, the Line of Goodwill: The Gateway of Human Unity, Matrimandir Visitor Access and Goodwill Habitat.

Goodwill Habitat: Auroville's present population stands at approximately 3000 and there is an urgent need for growth. Corresponding habitat for the growing population will have to be built to allow for the new energy and resources that the city needs to fulfill its aims.



The Gateway: Many people and institutions all over the world are working towards the goal of unity in diversity and the aim of the Gateway of Human Unity is to serve as a bridge between the World and Auroville and to host the meeting between the two. By creating a meeting place, Auroville is committed to learning from the discoveries and insights from without and to sharing the discoveries and insights learned from within.

Matrimandir Visitor Access: Auroville presently receives more than 700,000 visitors every year and the number is increasing. The majority of these visitors come to see the Matrimandir. As Matrimandir and the Park of Unity including the Lake are moving towards completion new more permanent arrangements have to be made to receive all these visitors according to the guidelines given by The Mother. Arrangements for receiving visitors to Matrimandir have been provided for in the Auroville Master Plan along the axis of the Line of Goodwill.



Line of Goodwill

Unlike other cities, Auroville starts from the centre, the Peace Area. It houses the Matrimandir, the soul of the city, which is to be surrounded by a lake. The city radiates from this centre according to the Galaxy plan which is defined by 12 Lines of Force. The Western Line of Force or Line of Force 1, named the Line of Goodwill, is the longest of these Lines.

Spanning over 800 meters and it connects the West Entrance of Matrimandir at the Lake to The Gateway, at the far end, while integrating the Matrimandir Visitor Access and the Goodwill Habitat along its length. This Line of Force is an integral part of the Galaxy Plan.

The profile of the Line of Goodwill is envisaged as a rising hillscape, where one can walk through rooftop gardens from the lowest areas of interconnecting Habitat clusters, starting from the Lake at the West Gate of Matrimandir to the highest level, 18 stories, at the Gateway.

The Line of Goodwill will be porous with a 45% void to built-up ratio, full of open spaces and open to the surrounding nature.

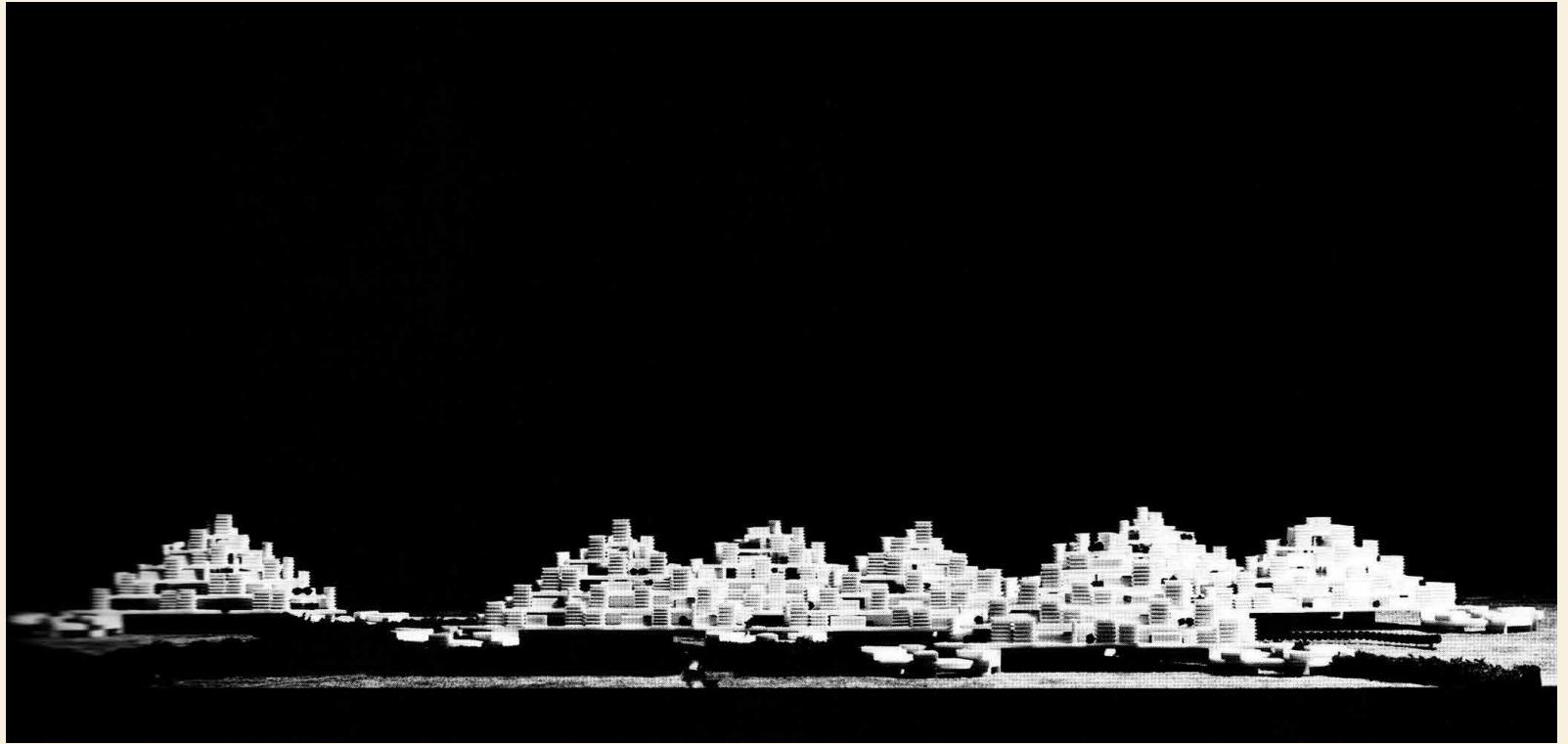
The Line of Goodwill wants to be a green building in every sense, including the integration of nature (wind, water, renewable energy, plants) into its design and fabric.

The Line of Goodwill aspires to apply cutting edge alternative energy technologies minimizing the carbon footprint even in the construction phase.

From the point of view of Auroville, building the Line of Goodwill is an opportunity to build in the spirit of experimentation and innovation with all-inclusiveness and collaboration within Auroville and between Auroville and the rest of the world.

It is seen as a prototype for building the “City the Earth Needs” which implies the highest standards of ecological and environmental sensitivity both towards man and nature in the design, the execution and the realized project honoring the immense amount of work already done to regenerate its land and environment by Auroville.

It is seen as a prototype building for the “City the Earth Needs” which implies the highest standards of ecological and environmental sensitivity both towards man and nature in the design, the execution and the realized project honoring the immense amount of work already done to regenerate its land and environment by Auroville.



Habitat

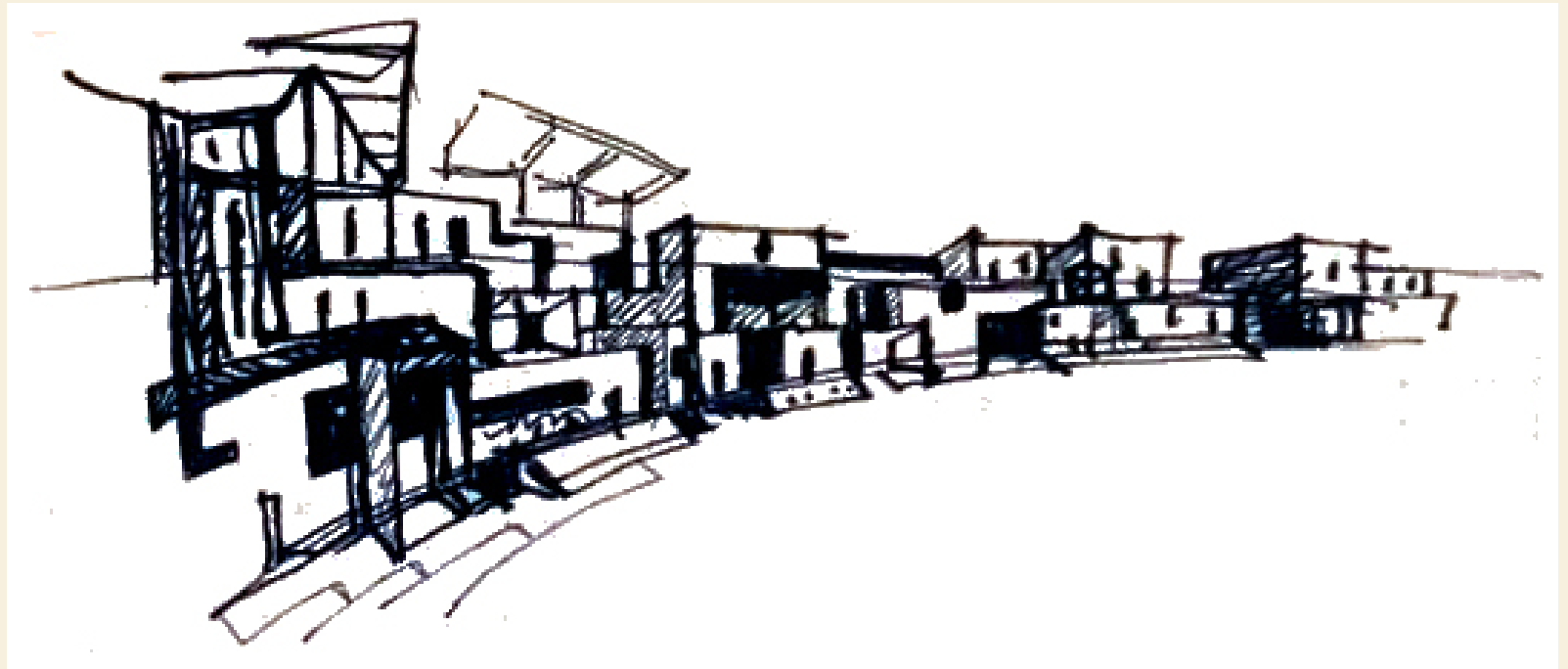
Situated in Auroville's Residential Zone, the Line of Goodwill must fulfil its objective of managing density and house up to 8000 people. Starting from the Matrimandir Lake front at Ground level, the Goodwill Habitat will gradually rise in height till it reaches a natural canyon at G+14 beyond which lies the Gateway.

A Conscious Coexistence

The project calls for a new type of housing reflecting Auroville's unity in ways that are both material and spiritual and create inventive bridges with the past and the future. It will concentrate urban living patterns and contemporary arrangements with a conscious use of new technologies while nurturing an inner soul space and a coexistence with humanity and nature. It will manage resources consciously and create artistic environments for a society to grow harmoniously as in ancient traditions.

As a prototype for coexistence the Goodwill Habitat will welcome people of all national, social and economic backgrounds, embrace the diversity of local and global strata, all languages, age and gender so that people can learn to live together in harmony.

The Goodwill Habitat will develop in a phased way together with Gateway and the Matrimandir Accessway, starting with a first phase for 500 people.



Housing a New Society

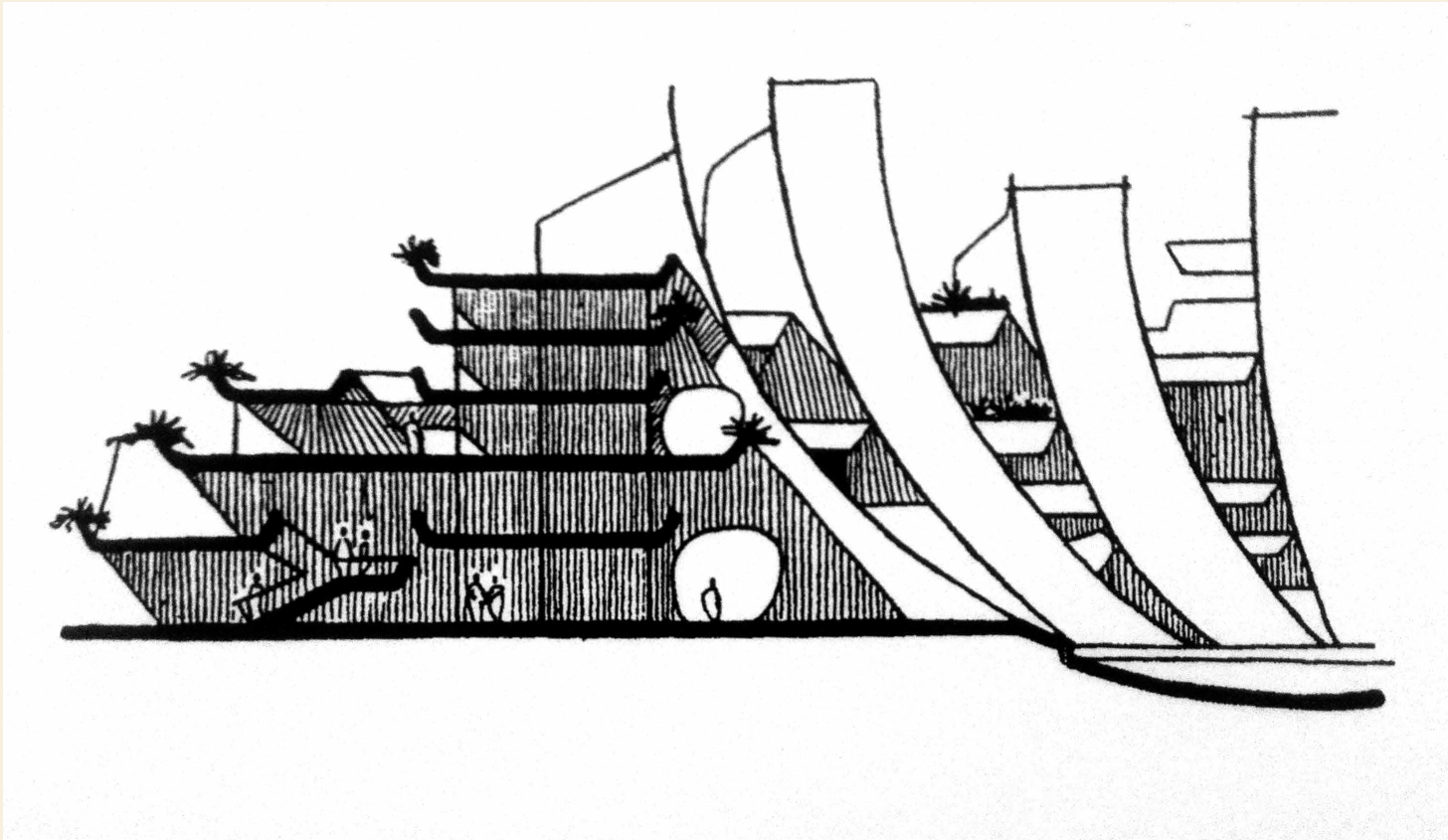
Auroville will be a site of material and spiritual researches for a living embodiment of an actual human unity.

Habitat will provide individual housing and collective social spaces that are simple, rich, beautiful and conscious.

At Ground level Habitat will face the Matrimandir Lake, where it will offer a contemplative space, like a meditative tea room, a place to experience beauty.

Levels 1 to 4 will be more social and collective and offer all the amenities like a reception, collective kitchens and restaurants, inner gardens and courtyards, libraries, lounges, offices, creche and play areas, stores for basic needs, health facilities, laundries and guest facilities.

A Community Plaza is envisaged at level 4, with an indoor amphitheatre, auditoriums and exhibition spaces plus administrative and maintenance sections for the whole Habitat.



As levels rise the building will grow more porous, quieter and private, allowing a free and contemplative atmosphere. Habitat will be interconnected with gardens, ponds and pathways from ground level to the roof and across its horizontal span with private, semi-private and public circulations.

A diversity of apartment designs is envisaged for singles, couples and families, student groups and guests. Common areas will remain open as study spaces for children in this city of unending education.

Care will be taken in design not to stack people in apartments in an impersonal manner but offer a flow of open spaces, as has been tried at Sunship, integrating the beauty of the environment with the atmosphere of Auroville and its Soul.



Earth. Wind. Water. Solar.

The Goodwill Habitat wants to serve as an exemplary model not just for Auroville but also as a prototype of a sustainable, collective coexistence for India and the world through best practices in urban planning with the environment, through architecture and design and by creating new models for collective habitat.

Earth: Economic land use. Sensitive integration with surrounding environment. Green shafts between buildings. Urban farming on the roof. Responsibility towards the earth.

Wind : Architecture will be climate responsive, avoiding air conditioning except in collective spaces and for special health needs.

Water : Conscious use of this resource. Rain water harvesting. Waste water recycling.

Solar: Solar energy panels on roof to capture most of the energy and back up for the building

Waste Management: Sewage recycling to be integrated in the building design. Proper waste management to be planned from the construction stage with the Wasteless Team.

Materials: Study different types of sustainable materials together with lighter high tech possibilities to keep the building light and porous as it goes higher.

Key Aims: collective, sustainable, experimental, interdependent, self-sustainable.



Living Laboratory

Auroville is known as a field of experiment. The Line of Goodwill's Habitat experiment in collective coexistence will encourage a paradigm shift in attitudes nurturing a new spirit of sharing, responsibility, beauty and oneness.

Aims:

- It will eliminate a client-builder relationship.
- Move away from personal ownership towards a collective living.
- Housing and collective spaces will be an asset of Auroville.
- Housing allocation will be decided together with Auroville's Housing Service.
- Will encourage experiments in areas of culture, education, architecture and environment.
- Will offer some facility or service for Auroville's collective use like laundries, the community plaza, study spaces and offices and welcome guests.
- Encourage the growth of unique urban streets and enable different types of mobility : pedestrian, cycle, and a monorail station in the Crown junction.



Beauty

This manifestation of beauty and harmony is part of the Divine realization upon earth, perhaps even its greatest part...

Art is nothing less in its fundamental truth than the aspect of beauty of the Divine manifestation.

Artistic zoning in both private and social spaces will be an integral part of the project design and atmosphere.





Fraternal Funding

Auroville is an international project for humanity as a whole. It is an invitation for all those who thirst for progress and aspire to a higher and truer life. People are drawn to Auroville as the world changes rapidly and the city has to be prepared to house them

Not everyone can live in Auroville physically, but all can participate in different ways to help make this dream a reality. Auroville continues to be built with the help of donations from all those in India and elsewhere who feel inspired to nurture this experiment.

The Goodwill Habitat hopes to inspire all those who wish to see Auroville manifest by supporting new models of living that can improve the life of cities qualitatively.

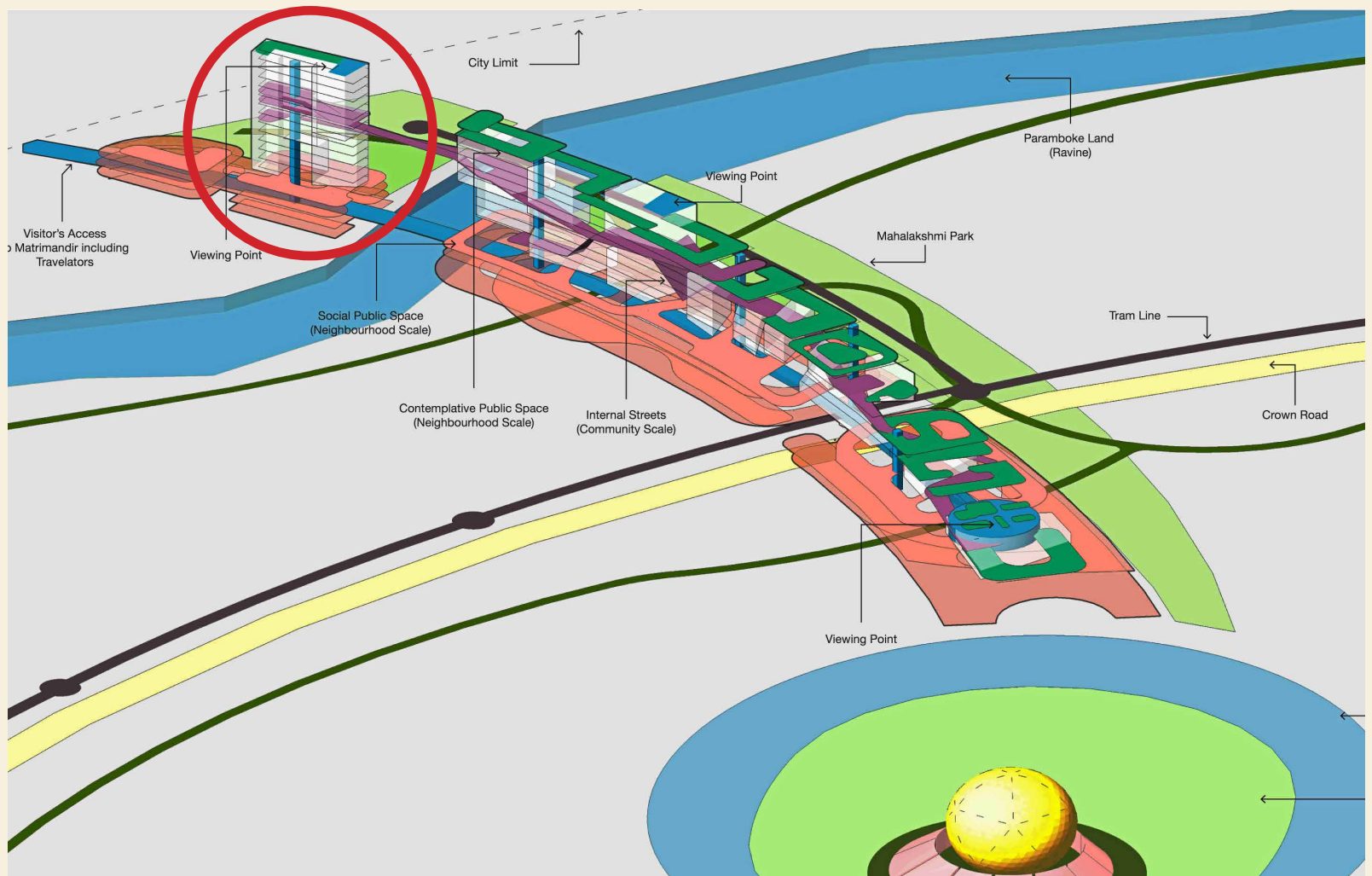
Self Maintenance of Project

To maintain the buildings and the area a Service Team will be created. It will draw from the experience of projects like Citadines and Sunship that self-manage through monthly service contributions from all residents as well as fraternal contributions plus alternative donations to ensure its overall maintenance.

Preliminary Budget to accommodate 500 people
in the first phase:

Rs 100 Crore / 15 million Euro





The Gateway

The Gateway is to be one of the first phases of the Line of Goodwill. The Gateway will be the first point of entry for visitors in their meeting with Auroville. Acknowledging that the World has much to offer Auroville, Auroville would also like to share insightful journeys towards consciousness, in order for visitors to take inspiration for their own life journey.

While spiritual journeys are personal, in Auroville the result of these journeys is expressed in many aspects of life – in everything from daily life and routines, to job creation, production and consumption. These insights are worth acknowledging and can create a framework for many conversations between Auroville and Auroville visitors.

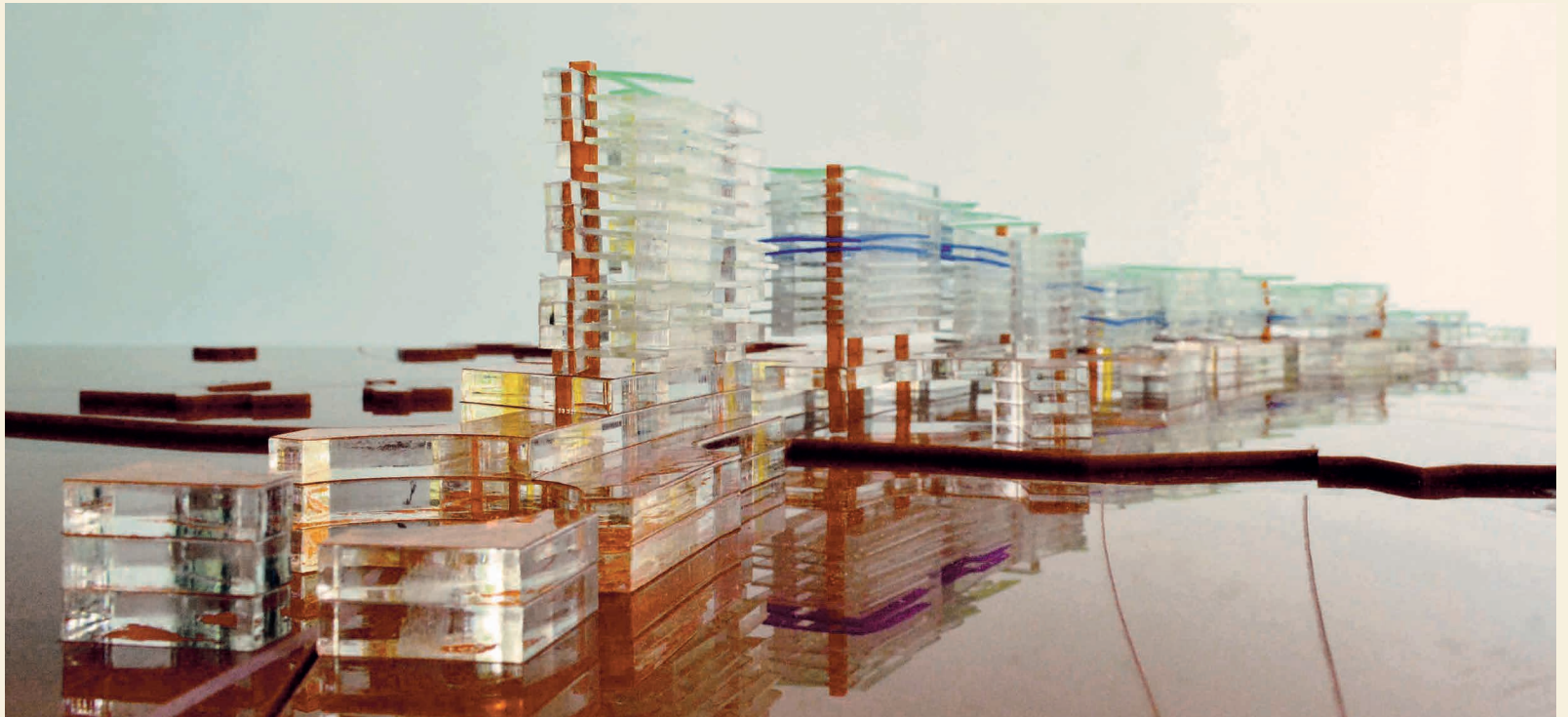
In these meetings and conversations the Gateway will allow Auroville to explore and accept all the goodness happening in the World, while also allowing the visitors to explore Auroville's ambitions to contribute to humanity and to human unity.

Through conversations, the Gateway will touch all visitors with the values of Auroville, and everybody would leave inspired to grow towards a higher consciousness wherever they are in their life journey. And they will leave with an invitation to return.

Visitors

Everybody is welcome, but not everybody is ready to start on a life-changing journey. For these visitors The Gateway aims to sow a seed of understanding of consciousness. These visitors are welcome again to deepen the conversation when they are ready to. The Gateway aims primarily to attract visitors curious to and possibly on their journey towards spirituality, consciousness, and a better world: Unity in diversity. In joint efforts, conversations between these visitors and Auroville will accelerate the process towards Auroville's goals and values in an effort to serve humanity.





Outreaching communication should focus on preparing and conditioning the visitors, so they are receptive for the meeting and what Auroville is offering. Equally it should prepare Auroville for those visitors that have something at heart they'd like to bring to Auroville.

The Gateway obligations

The Gateway would offer activities to support a two-way dialogue. Being the host, the Gateway is also responsible for formats to securing the dialogue to remain proper, non-judgmental and based in goodness.

The objective to have a dialogue approach to meeting the visitors is to avoid condescending attitudes and to invite openness and willingness to listen and learn and co-create insights.

Atmosphere and Guidance

The whole of the Line of Goodwill will be a physical metaphor where the material structure and its usage reflect the spiritual principles of Auroville. The higher one ascends in the buildings the quieter and more contemplative the atmosphere created. The further in one goes the more intimate the connection with Auroville and its Soul.

Where the Matrimandir is emotional and pure in its architectonic communication on the outside and rational, simple and clear on its inside, the Gateway would be perceived opposite: Rational, simple and clear outside while allowing for emotional complexity inside, hosting many different activities and experiences. Yet, the inside of the Gateway should impose feelings of serenity, inducing awe and humbleness. The architecture of the Gateway should absorb visitors, creating an illusion of vast spaciousness and an impression of uncrowdedness. Silence should be instilled, and visitors should be invited to experience the power of silence. Ques from semi-conscious elements influence experiences and help control visitor behavior.



Leading by example, staff will encourage conscious and self-controlled behavior, and sound absorbing materials will add to the silencing effect.

The Entry Plaza will be a quiet area and will distribute visitors towards activities in the Gateway. Help will be available in the Plaza to help visitors plan their visit by means of Intelligent signage, e-guidance system and staffed information desks.

The Gateway will provide access to the Viewing Points and filtered access to a new Matrimandir Visitor's Hub within the Line of Goodwill, which will provide all facilities for visitors to Matrimandir.

Conversations Inside the Gateway

Creating a sense of endless opportunities, conferences and seminars will always be ongoing. It will always be worthwhile to return to Auroville.

Conversations with the visitors will predominantly be curated and structured in the form of workshops, seminars and conferences. Visitors will also be invited to leave their mark, for example by sharing thoughts, ideas or images to be displayed inside the Gateway.

Invitations will be extended to progressive thinkers, philosophers, activists, artists and thought-leaders to conduct workshops in alignment with Auroville values. Other organizations that are working towards Human Unity could also be engaged to conduct conferences and seminars in collaboration with Auroville.

Elaborate Wellness seminars for consciousness, mind and body, would create reasons to assemble the

World's best minds artists and implementers.

Tying into Auroville Values, learning workshops could include: coaching and well being, sustainability, and social awareness and will include all the experience of the social enterprises of Auroville.

Integral Yoga would inspire seminars grouped under two headings:

- Balancing your inner self exploring effects on parenting, wellness and psychological wellness.
- Interacting in societies and social life leading towards benefits for humanity and Human Unity.



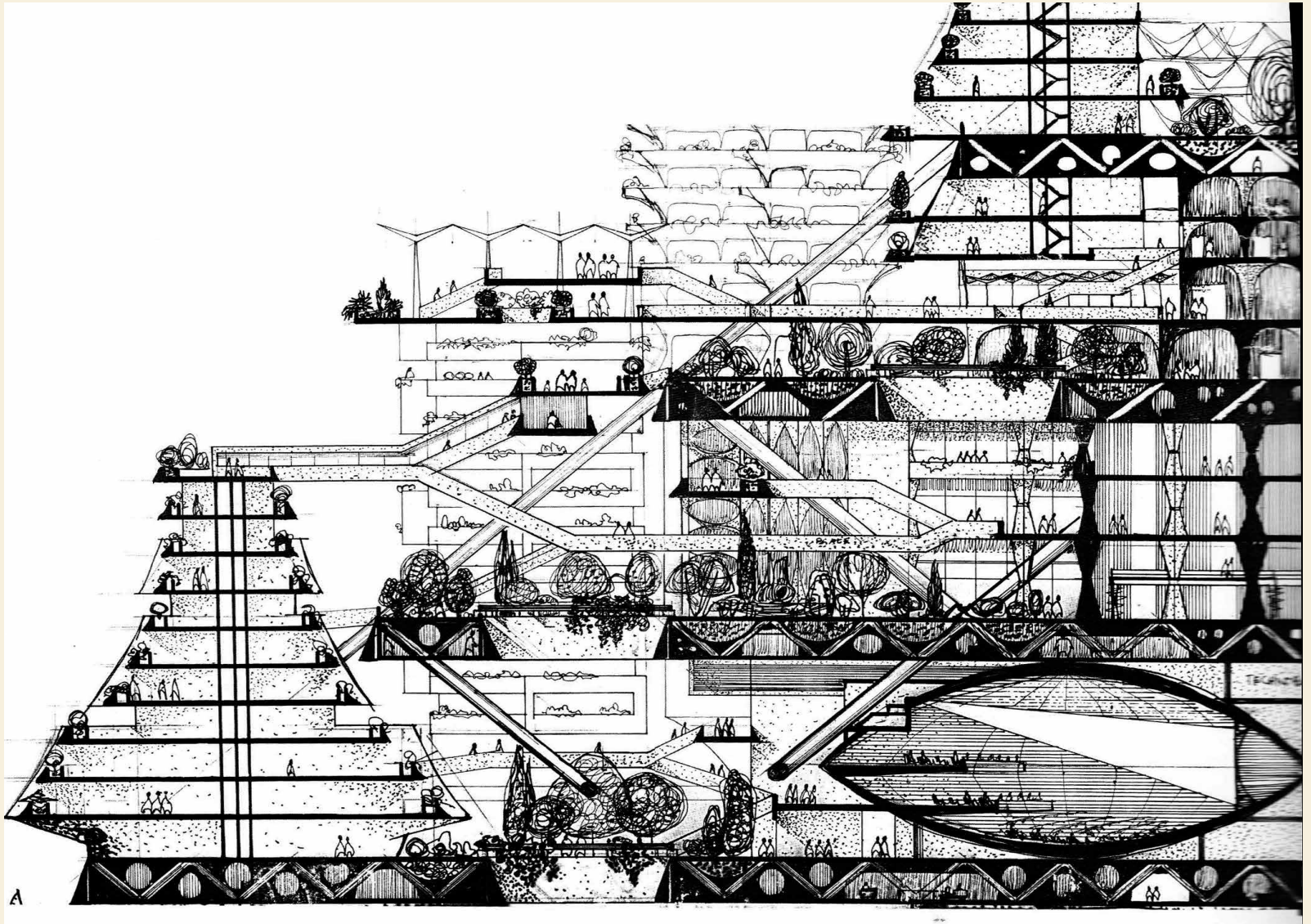
All experience and healing oriented Auroville Units will have central place and role in creating and executing conversations and interaction with visitors.

Living Laboratory

- “Auroville will be a site of material and spiritual researches for a living embodiment of an actual human unity.”
- Auroville is well known both in India and the world at large for its integral approach to Education, Environment, Reforestation, Organic Farming, Architecture and Appropriate Building Technologies, Alternative Energy, Health and Healing, Culture, Creativity and Commerce. The Gateway aspires to consciously create a platform which will display these areas of excellence and Auroville talent in their full potential.
- The future for Auroville lies in its strengths of being a “melting pot” of cultures and ideas, its strong interest in research and development and its wish to be in the forefront. Fueled by India’s accelerated development it is now moving into a Knowledge Economy with a high complexity of consumer demands including increasing consciousness of sustainability and social awareness, and yet demanding products with a high content of design and knowledge driven by Auroville’s values. Many units are already delivering solutions and ideas that the respond to these demands and the Gateway will serve as a platform to present these products.

Retail and restaurant space

For Auroville retail, the space should fuel exploration, discovery and inspiration
Retail and eating space will be spread out so that it does not jeopardize the serenity of the conversation space in The Gateway.



Auroville has many facets and below are some of the activities that will be part of Gateway:

Education

Research

Vocational Training

Volunteering

Internships

Sustainability

- Energy
- Environment
- Water
- Appropriate Building Technologies
- Waste and Recycling
- Organic Farming
- Reforestation

Incubation

- Design lab
- Workshops

Health & Wellness

- Alternative Treatment and Healing
- Therapies
- Music/Bodyworks
- Awareness through the Body
- Yoga
- Spas

Workshops

- Environment
- Waste and Recycling
- Cooking and Nutrition
- Pottery
- Natural Dyeing
- and many more

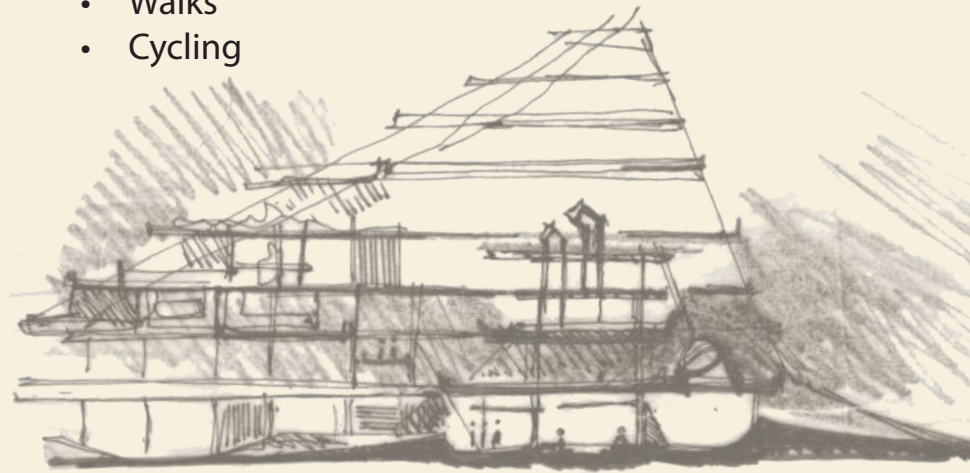
Design/Architecture/Landscaping

Hospitality

- Hotel
- Dormitory
- Wide range of Eateries

Recreation

- Surfing
- Riding
- Walks
- Cycling





The Gateway will interweave Art and Beauty into all its spaces. There will be large beautiful spaces for Conscious Retailing, Events and Exhibitions. There will be Conference Facilities for cutting edge meetings and networking to bring top participants in chosen fields from all over the world. This will create an Integral Auroville Experience for visitors.

The Gateway will have the capacity to give immersive multi-faceted experiences to visitors coming to Auroville over several days, to attract actively engaged people from all over the world and to deliver fully rounded experiences of Auroville's spirit including spirituality, humanity, community, environment, excellence and progress.

Gateway Business Plan

The Gateway is a large scale multi diverse project, which will contain and showcase all aspects of Auroville: production, consultancy, education, healthcare, art, exhibitions, hospitality etc.

The Gateway has two aspects. Participants with a commercial aspect will contribute and in this way provide for the public spaces, exhibition areas, education and other interests which will provide the integral Auroville experience.

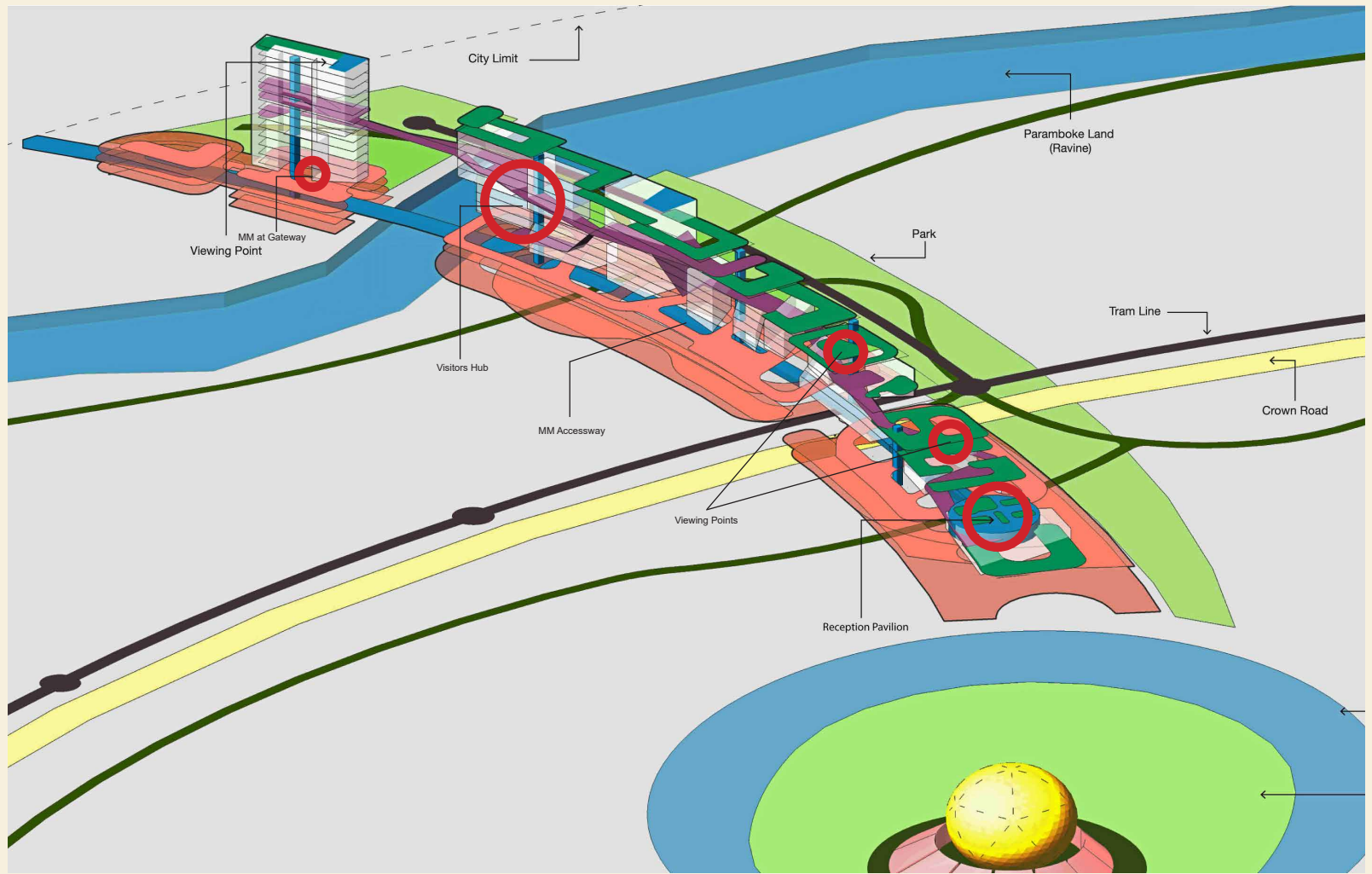
The cost of Gateway is presently estimated at Rupees 130 crore. The intention is that it will be fully externally financed by donations and soft loans which do not require collateral.

This cost, financed over 15 years at 10% interest rate with fixed annual payment, would mean a paying back of Rupees 17 crore every year over 15 years.

Projected Income per year (2018 value):	Indian Rupees
Viewing Lift for Visitors Going to the Roof Garden :	5.5 crore
Hotel and Dormitory :	5.0 crore
Income from turnover of retail/eateries, etc:	24.0 crore
Total :	34.5 crore

Projected cost per year (2018 value):	Indian Rupees
Staff management of 150 people :	5.0 crore
Electricity, water, generator, maintenance, etc :	8.0 crore
Interest and repayment :	17.0 crore
Total :	30.0 crore

The Gateway budget will from the start provide a substantial income to Auroville's central fund and when the loan gets repaid the Gateway will be an economic dynamo for Auroville's collective economy.



Matrimandir and the Gateway

The Gateway will be the first point of entry into Auroville for all Visitors, including all visitors to Matrimandir. At the Gateway visitors will be offered an introduction to Auroville, its activities and its values. This will be done by creating an integral experience where visitors can dive into the many aspects and facets of Auroville.

It is at the Gateway that visitors will find exhibitions and videos on the history and the purpose of Matrimandir.

Practical guidance will also be on hand as to how to access the scenic pathways to the roof-top Viewing Points on the Line of Goodwill and where to go to make bookings to visit the Inner Chamber. At the Gateway there will be a special reception lounge, with videos facilities, for the significant number of special guests Auroville and Matrimandir receive every day wishing to visit the Viewing Points or the Inner Chamber.



Matrimandir Viewing Points

Viewing Points for Matrimandir and the Park of Unity will be placed on the roofs of the Line of Goodwill. Two Viewing Points are envisaged.

From the roof at the level of the Crown at 12 storeys there will be a panoramic Viewing Point of all Auroville including Matrimandir and the Park of Unity.

From a height of 6 storeys there will be a more intimate Viewing Point of Matrimandir and the Park of Unity.

Access to the Viewing Points will be by scenic walk ways slowly rising through the buildings of the Line of Goodwill from the Gateway.

These walkways will be isolated from the walkways used by the residents of the Habitat and will not disturb them.

The walkways will be designed to be accessible for all with electric vehicles for the handicapped available.

The walkways will be designed as both exhibition space and nature walk.

The walkways will be designed in such a way as to naturally bring an atmosphere of quietness and inwardness without codes of conduct having to be imposed.



Matrimandir Visitor Hub

Beyond the Gateway and just beyond the peramboke canyon there will be a custom-built facility for receiving visitors who want to enter the Matrimandir.

Visitors wishing to enter Matrimandir for Concentration for the first time will be directed from the Gateway to a Booking Office where they will find easy to use booking facilities and all the information they will need to make their visit to Matrimandir peaceful and trouble free.

Quite separate from the Booking Office, elsewhere in the Hub, there will be the facilities to receive visitors for Concentration on the day of their visit.

The reception area for visitors for Concentration will contain a check-in hall, a secure left property facility for all bags, cameras and cell phones and personal comfort services such as toilets and drinking water fountains.

There will also be a video room where all first-time visitors will be shown videos on Matrimandir, its history, its purpose and its codes of conduct before they make their way to the Matrimandir Accessway.



Matrimandir Accessway

Matrimandir is dedicated to minimizing motorized traffic generated by visitors to Matrimandir. All visitors will leave their vehicles at the main Visitor parking at the city limits. From there visitors will either walk to Matrimandir or be transported by a custom-designed transit system.

The terminal for the Matrimandir Accessway will be found inside the Matrimandir Visitors Hub and will only be accessible to visitors with passes for Concentration in the Inner Chamber, visits to the Park of Unity or events at the Amphitheatre.

The Matrimandir Access Way will consist of a walkway and a transit system with seating for up to 100 people to convey visitors to Matrimandir and the Park of Unity back and forth along the Line of Goodwill between the Terminal and the Matrimandir Reception Pavilion at the West Gate of Matrimandir at the Lake.

The Transit System will use alternative energy and be non-polluting, slow, secure and silent. It will be designed to draw visitors into their own personal inner space as a prelude to their visit to the silence of the Park of Unity and the Inner Chamber of the Matrimandir.

The Access Way itself will be designed to be beautiful and quiet, to be fully integrated into nature and have an atmosphere that will naturally illicit quietness and inwardness as visitors take this first stage of their journey towards the Peace Area.

Matrimandir Reception Pavilion

The Matrimandir Reception Pavilion will be found just between the eastern end of the Line of Goodwill and the Lake at the West Gate of the Park of Unity.

Visitors will reach the Reception Pavilion via the Matrimandir Accessway along the Line of Goodwill.

At the Reception Pavilion visitors will find places to both stand or to sit down and take in the amazing view of Matrimandir across the Lake.

The Reception Pavilion will be a gathering place for all the groups of visitors going to the Inner Chamber for Concentration.

And it is here that first-time visitors will receive an inspirational talk on Matrimandir and its higher significance as well as guidance on codes of conduct from a senior Aurovilian guide.

They will also find comfort facilities such as drinking water fountains and toilets.

The Reception Pavilion will provide similar comfort facilities for staff and Auroville residents entering the Park of Unity and Matrimandir as well Aurovilians, guests and visitors attending events at the Amphitheatre, including a secure depository for bags, cameras and cell phones.

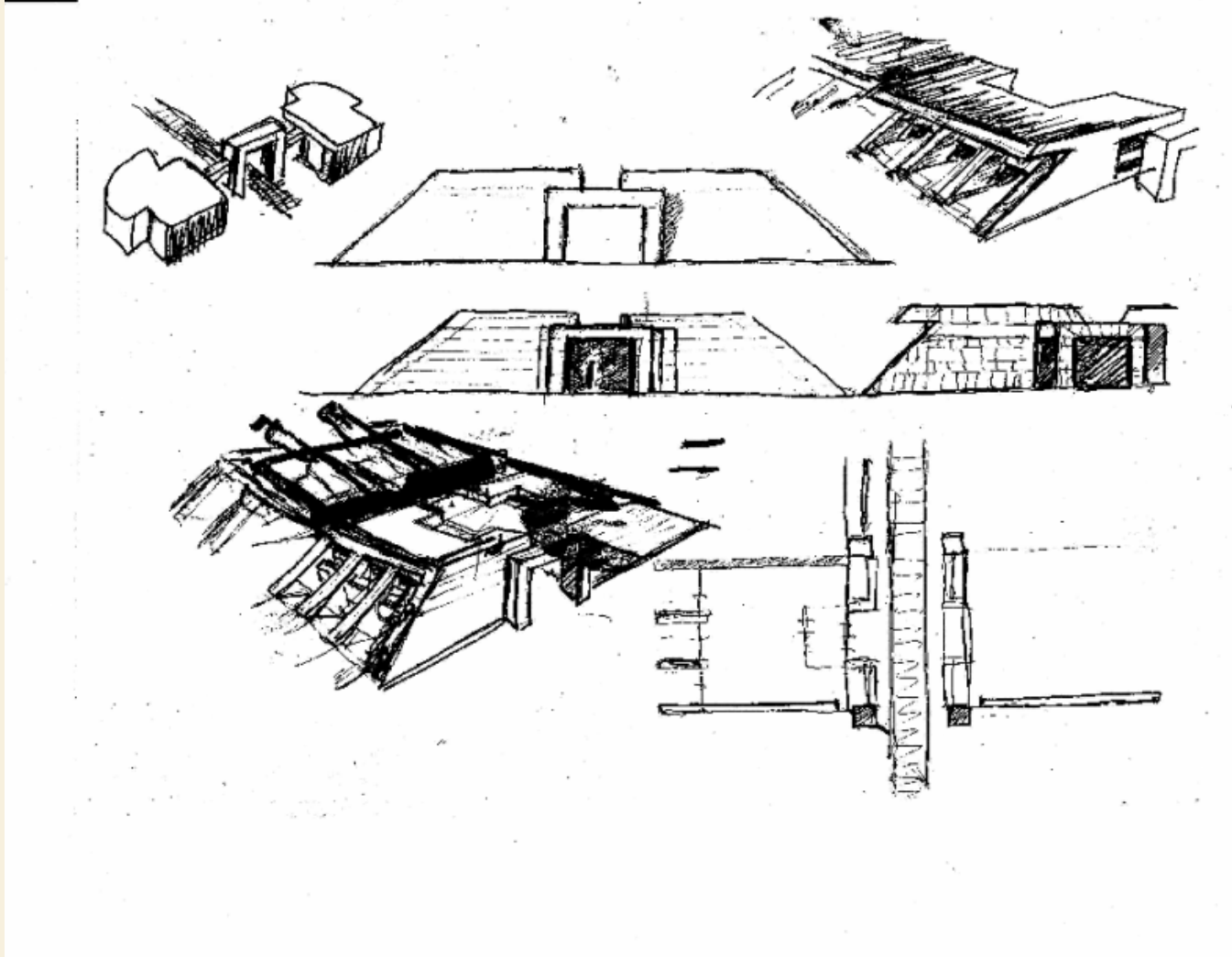
Less obtrusively, the Reception Pavilion will also house some offices for return bookings and for the reception of donors.

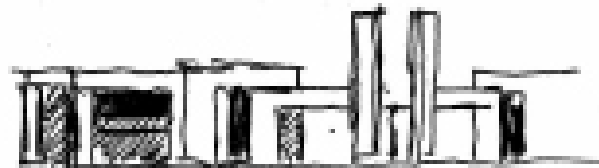
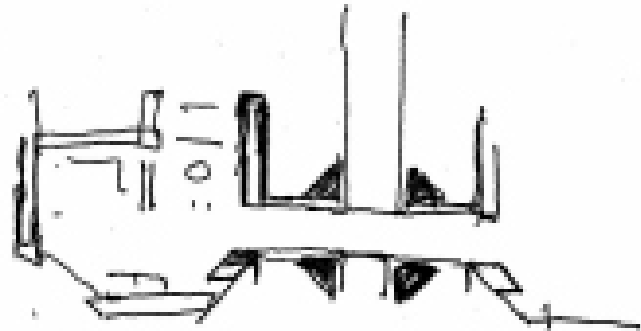
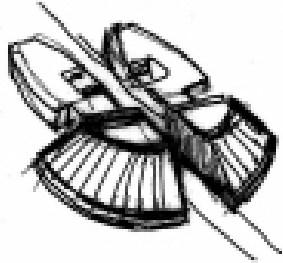
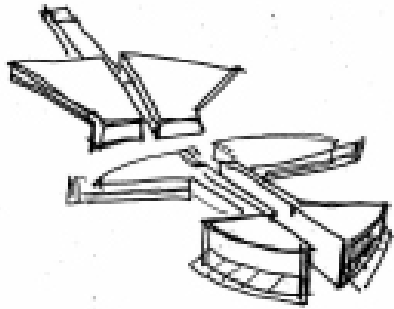
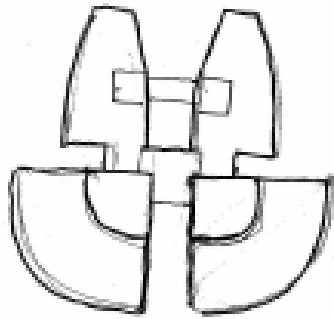
There will be an area for the storage and drying of the Matrimandir umbrellas that are handed out to visitors against the rain or the sun.

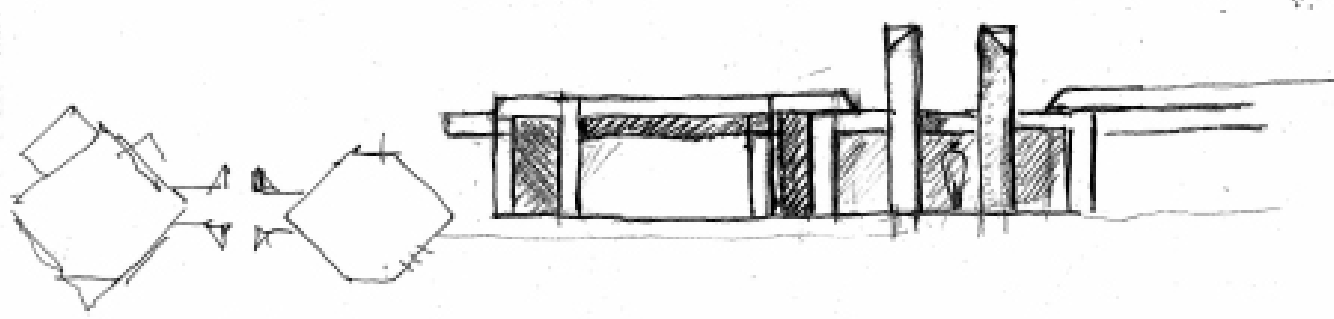
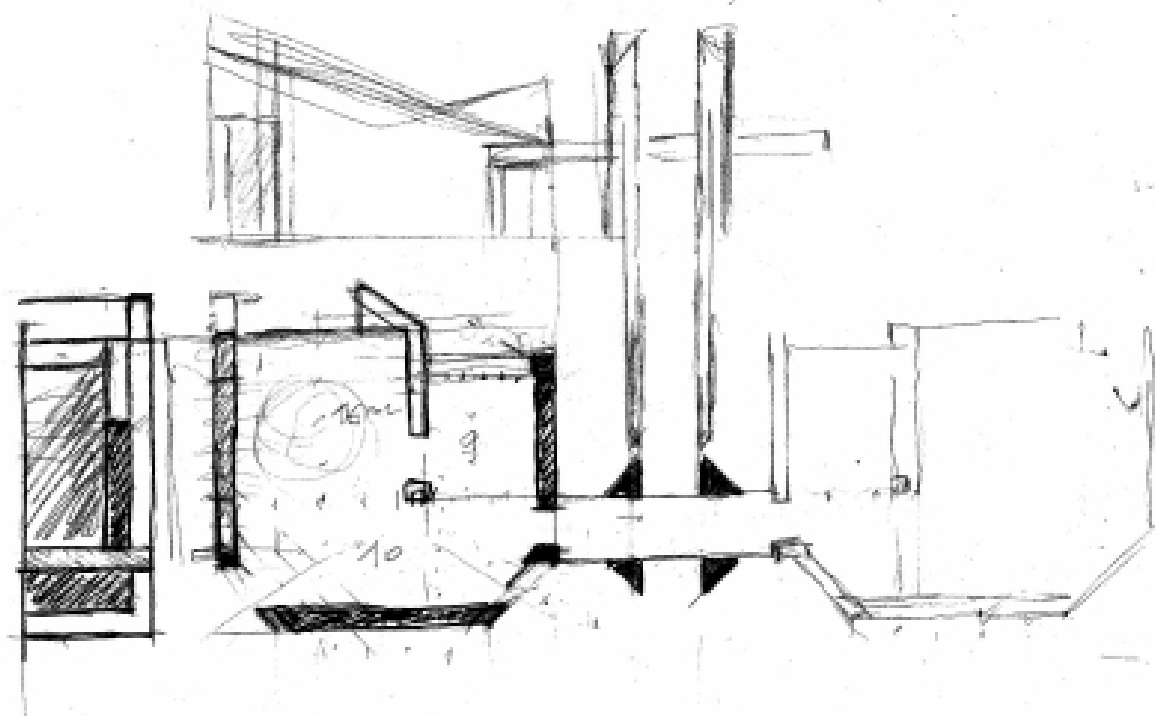
There will also be covered parking and charging points for the electric vehicles provided for the use of the elderly and the handicapped.

Matrimandir Reception Pavilion Sketches

by Roger Anger









Timeline

- Goodwill Habitat, the Gateway and Matrimandir Visitor Access are now being initiated as part of the Line of Goodwill and will be the largest project of Auroville once complete.
- A preliminary Urban Design Study of the Line of Goodwill concepts has been done and a letter of Intent has been issued by L'avenir d'Auroville.
- With the permission from L'avenir d'Auroville to source cutting-edge expertise in all fields relating to environmental sustainability of the project.
- In collaboration with L'avenir d'Auroville, to invite Auroville and outside architects, design, technical and resource teams for environment, landscape, building, waste management and to come together to set up a collaborative team to work on different aspects with the help of consultants.
- To prepare studies for a unified project design that can harmoniously integrate a variety of architectural concepts within clear parameters.
- Evaluation of costs.

Matrimandir Next Steps

- To complete a first phase study of architectural design for the Matrimandir Visitors Hub and the Matrimandir Reception Pavilion
- To complete a first phase study of the technical design of the Matrimandir Accessway and Transit System.
- To arrive at a 5 year plan for readiness in building.



Habitat Next Steps

- To prepare studies for a unified project design that can harmoniously integrate a variety of architectural concepts within clear parameters.
- Evaluation of costs.
- To complete a first phase study of architectural design for 500 people.
- To arrive at a 5 year plan for readiness in building.

Gateway Next Steps

- To invite all Auroville units, service and business and all activities to become part of the Gateway – their dreams should become part of the larger dream.
- An evaluation and audit of all products, services and activities that Auroville would like to offer.
- An Acceleration Program (a support program to help units grow and scale up)
- A 5-Year plan for readiness.
- Deeper analysis and interaction on creating an integral Auroville experience catering to a varied public.
- The design of the Gateway building and the intention is to launch an invited architectural competition at the end of 2018.
- The Gateway building would be completed within 4 years by 2023.



LOF-1@auroville.org.in